

RES G MRBLU series

RES (Riello Environment Solution) is the new Low NOx light oil burners series with extremely low emissions to meet the increasingly stringent demands for low environmental impact products.

This family consists of 3 models based on the same ventilation device, with an output range from 18 to 50 kW. This series of burners comes in conventional and balanced flue versions.

The new Riello RES are fitted with a microprocessor-based control box, with diagnostic functions.

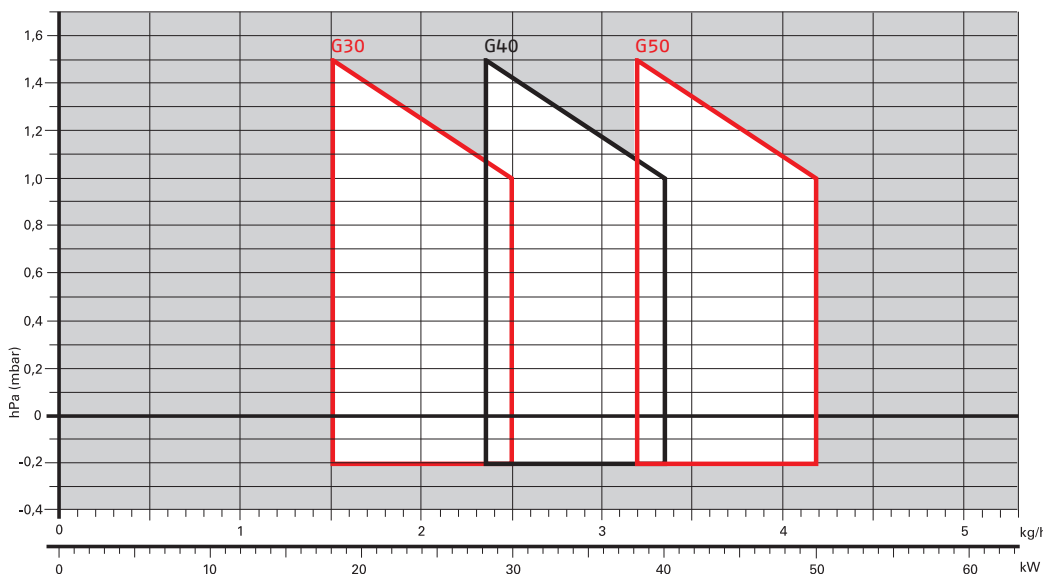
The new combustion head and the sealed ventilation system, keep NOx levels extremely low in spite of the small dimensions and very low noise emissions.

All the models are approved by the EN 267 European Standard, conform to European Directives, Machinery, EMC, Low Voltage, Boiler Efficiency. All burners are test fired before they leave the factory.



RES G30 MRBLU	18 ÷ 30	kW
RES G30 MRBLU BF	18 ÷ 30	kW
RES G40 MRBLU	28 ÷ 40	kW
RES G40 MRBLU BF	28 ÷ 40	kW
RES G50 MRBLU	38 ÷ 50	kW
RES G50 MRBLU BF	38 ÷ 50	kW

FIRING RATES



Useful working field for choosing the burner

Test conditions conforming to EN267
 Temperature: 20°C
 Pressure: 1013,5 mbar
 Altitude: 0 m a.s.l.

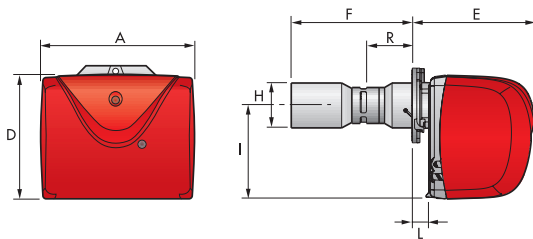
Low NOx One Stage Light Oil Burners

RES G MRBLU SERIES

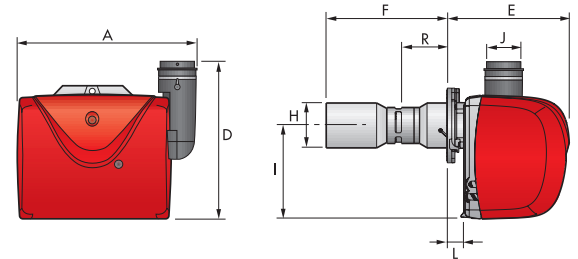
Overall dimensions (mm)

BURNER

RES G MRBLU



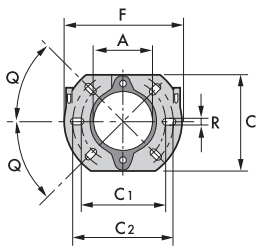
RES G MRBLU BF



MODEL	A	D	E	F(max)	H	I	L	R(max)
► RES G30 MRBLU	326	275	272	280	100	208	32	118
► RES G40 MRBLU	326	275	272	307	105	208	32	118
► RES G50 MRBLU	326	275	272	310	105	208	32	118

MODEL	A	D	E	F(max)	H	I	L	R(max)	J
► RES G30 MRBLU BF	383	351	272	280	100	208	32	113	75
► RES G40 MRBLU BF	383	351	272	307	105	208	32	108	75
► RES G50 MRBLU BF	383	351	272	310	105	208	32	129	75

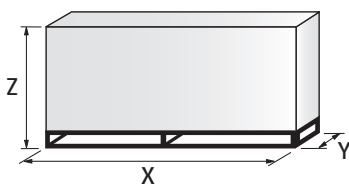
BURNER - BOILER MOUNTING FLANGE



MODEL	A	C	C1	C2	F	Q	R
► All models	106	166	140	170	189	45°	11

NOTE: These dimensions are the same as BF models.

PACKAGING



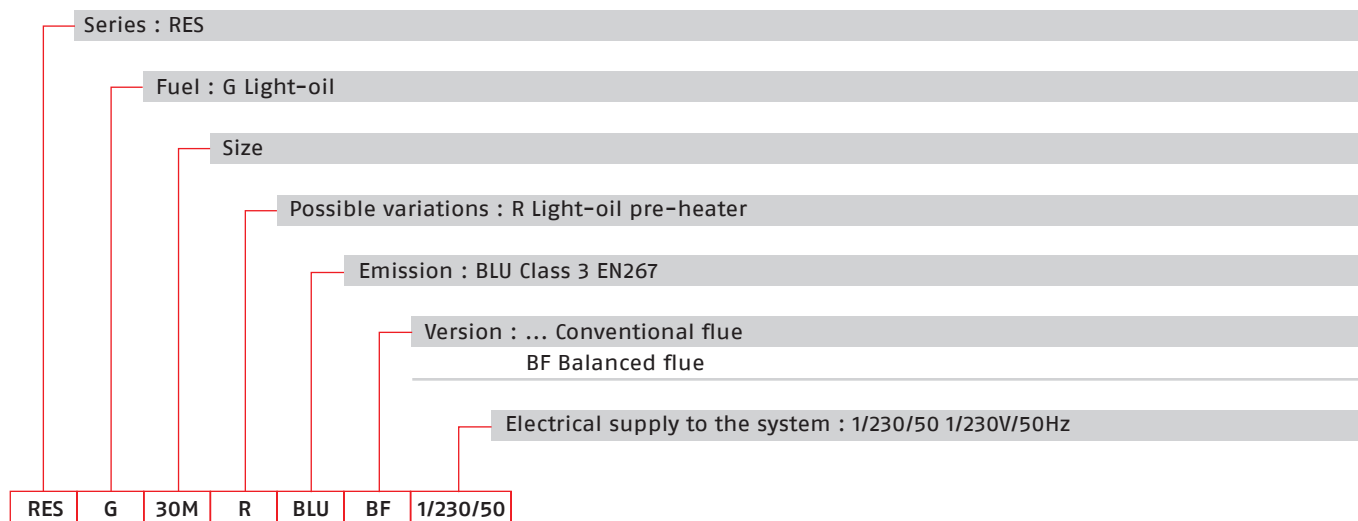
MODEL	X	Y	Z	kg
► RES G30 - 40 MRBLU	700	360	345	15,5
► RES G50 MRBLU	700	360	345	15,5

MODEL	X	Y	Z	kg
► RES G30 - 40 MRBLU BF	730	460	350	15,5
► RES G50 MRBLU BF	730	460	350	15,5

RES G MRBLU SERIES

Specification

DESIGNATION OF SERIES



STATE OF SUPPLY

Completely automatic monobloc light oil burners, with one stage operation fitted with:

- Forward blades fan and airtight fan house for high performance
- Sound proofing cover
- Air damper with inner adjustment for conventional flue version
- Air damper with external adjustment, with no need to remove the cover, for balanced flue version
- Single phase electric motor 230 V, 50 Hz
- Combustion head fitted with:
 - inconel 601 end cone resistant to high temperatures
 - ignition electrodes
 - flame stability disk
- Geared pump for fuel supply, fitted with:
 - filter
 - pressure regulator
 - connectors for installing a pressure gauge and vacuumeter
 - inner by-pass for preparing for single pipe installation
- Fuel feed solenoid incorporated in the pump
- UV sensor for flame detection
- Microprocessor-based burner safety control box, with diagnostic and remote control release functions
- Protection filter against radio interference (included into burner safety control box)
- Light oil nozzle
- IP X0D (IP 40) protection level
- PTC fuel heater.

Standard equipment:

- Two flexible pipes and two connectors
- Flange, screen, screws and nuts for fixing
- Grommet
- Flame tube
- 7-pin plug
- Remote control release kit
- Instruction handbook for installation, use and maintenance
- Spare parts catalogue.

Low NOx One Stage Light Oil Burners

RES G MRBLU SERIES

Available models

CODE	MODEL			HEAT OUTPUT		TOTAL ELECTRICAL POWER (kW)	CERTIFICATION	NOTE
				(kW)	(kg/h)			
20011492	RES	G30	MRBLU	18 ÷ 30	1,5 ÷ 2,5	0,28	-	
20011495	RES	G40	MRBLU	28 ÷ 40	2,4 ÷ 3,4	0,3	-	
20011498	RES	G50	MRBLU	38 ÷ 50	3,2 ÷ 4,2	0,3	-	
20011500	RES	G30	MRBLU	BF	18 ÷ 30	1,5 ÷ 2,5	0,28	-
20011502	RES	G40	MRBLU	BF	28 ÷ 40	2,4 ÷ 3,4	0,3	-
20011504	RES	G50	MRBLU	BF	38 ÷ 50	3,2 ÷ 4,2	0,3	-

Net calorific value: 11,8 kWh/kg; 10200 kcal/kg - Viscosity at 20°C: 4÷6 mm²/s (cSt).
The burners of RES series are in according to EN 267.

Burner accessories

7-pin plug kit

If necessary a 7-pin plug kit is available (in packaging of n. 5 pieces).

BURNER	KIT CODE
► All models	3000945

Light oil filter/degassing unit



To solve problems of air or water in the oil circuit a special filter/degassing unit is available, made up of aluminium cover, plastic tank, stainless steel filtering cartridge, air release cap and water purge valve. It is available singularly.

BURNER	FILTERING DEGREE (µm)	KIT CODE
► All models	100	3000926

PC Interface kit



To connect the control box to a personal computer for the transmission of operation, fault signals and detailed service information, an interface adapter with PC software are available.

BURNER	KIT CODE
► All models	3002731